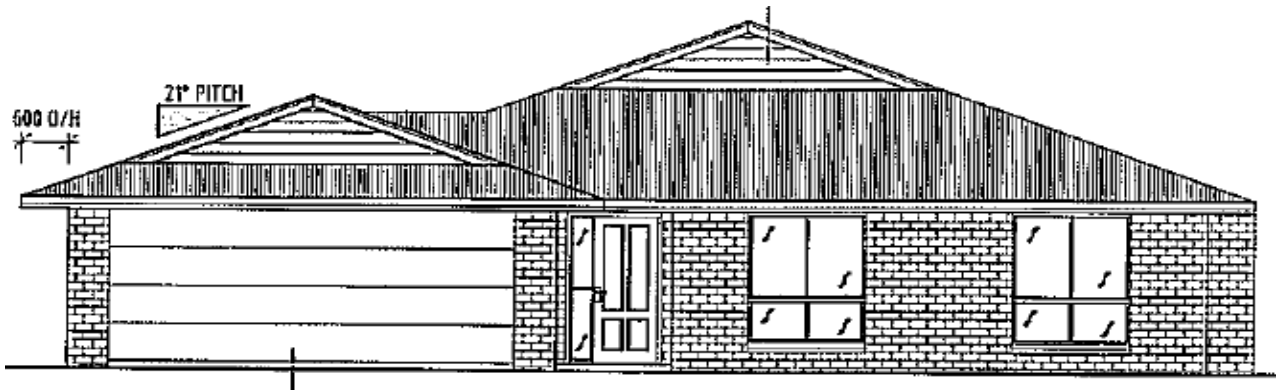


The Hudson 205

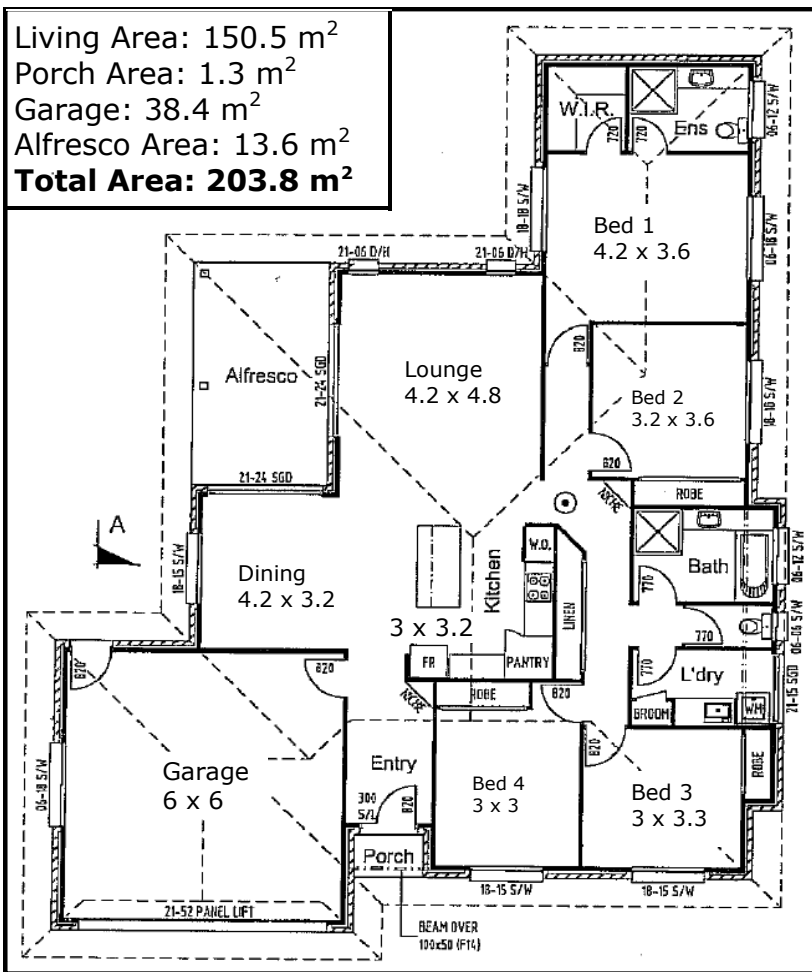
QBSA: 1039722



www.johnprovanbuilding.com.au



Living Area: 150.5 m²
 Porch Area: 1.3 m²
 Garage: 38.4 m²
 Alfresco Area: 13.6 m²
Total Area: 203.8 m²



This 4 bedroom design has an open plan living area with a dream kitchen. The large island bench and direct access to an under roof alfresco area makes it perfect for entertaining.

Main bedroom has a walk-in robe and ensuite while all others have built-ins. As with all our plans sizes are easily adjusted to suit your individual needs.

Working from home? Bedroom 4 can be changed to an office /study with the door directly from the entrance.



133 YOUNGMAN STREET, KINGAROY QLD 4610
 PHONE 07 4162 5922 FAX 07 4162 5933
 EMAIL admininfo@johnprovanbuilding.com.au