

The Wills

QBSA: 1039722



 4  2  m² 143.5

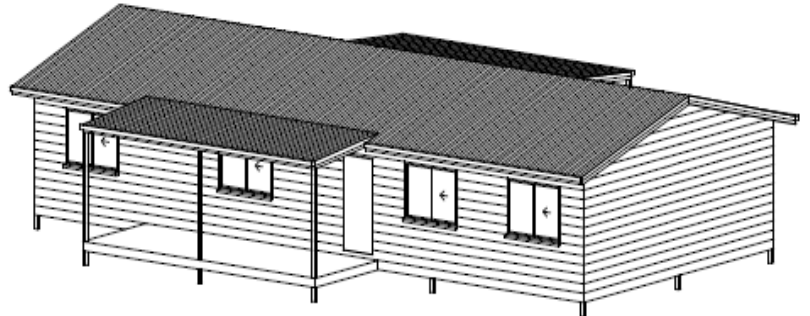
www.johnprovanbuilding.com.au

Deck area 31.2 m² Living area 112.3 m²

Our Settler range of plans are ideal for small acreage or the first home buyer.

The standardised sizing and simple layouts ensure value for money.

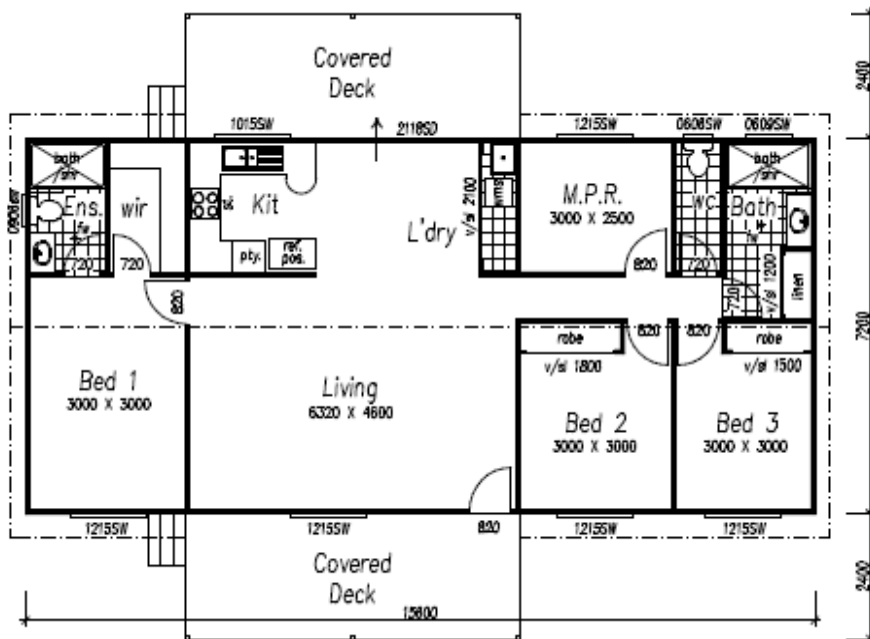
Central living with a deck both sides extends the living to the great outdoors. This home includes an ensuite and walk in robe to the main bedroom.



These homes look great in a bush setting when clad in low maintenance colorbond cladding. A popular change is to have a full length deck one side only.

Quality fittings are used but we limit the choices to ensure that the cost stays at an affordable level.

These can be built to any stage for the owner builder to complete or finished ready to move in.



133 YOUNGMAN STREET, KINGAROY QLD 4610
PHONE 07 4162 5922 FAX 07 4162 5933
EMAIL admininfo@johnprovanbuilding.com.au