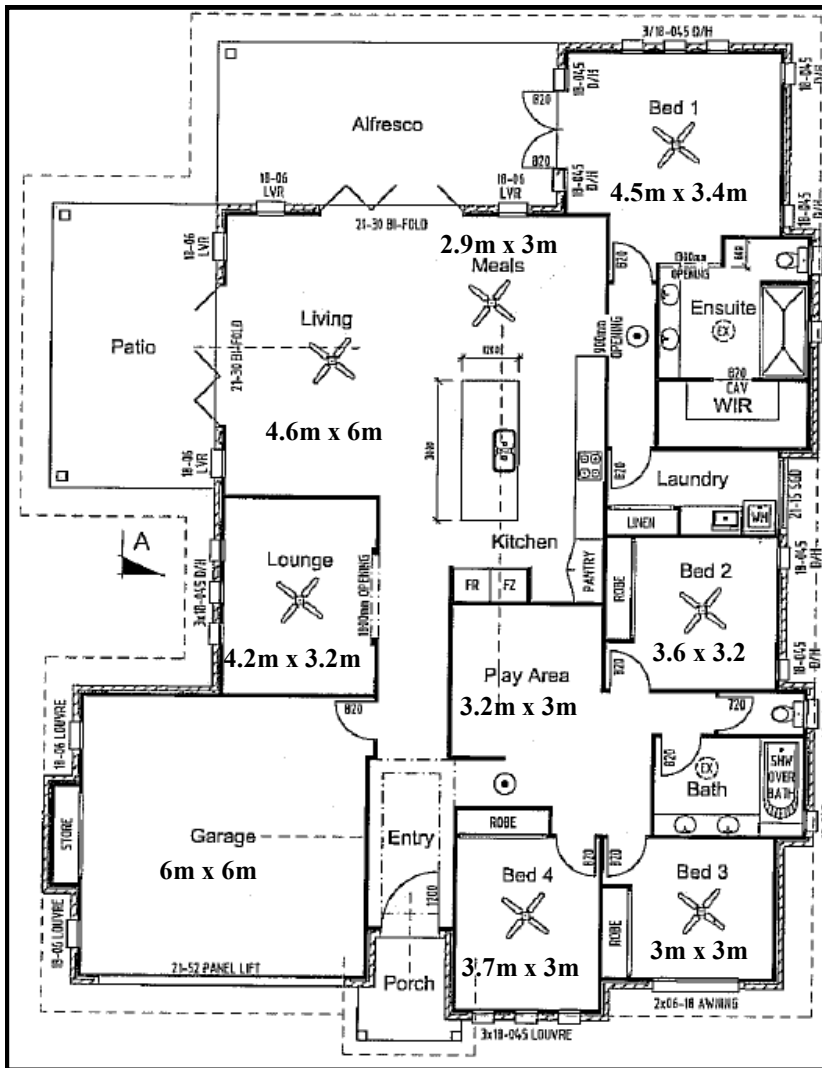
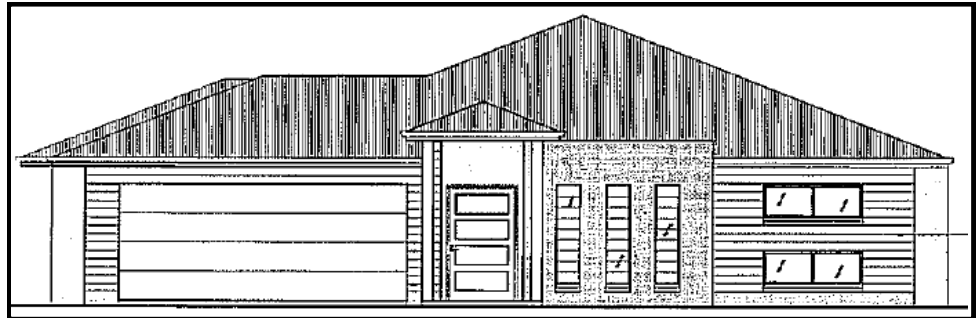


# The Astaire 300

QBSA: 1039722



[www.johnprovanbuilding.com.au](http://www.johnprovanbuilding.com.au)



This luxury 4 bedroom design has an open plan living. Generous bedroom sizes, with built-ins to all, the master comes with a walk-in robe and ensuite, outdoor entertainment area, separate lounge and a sizable kitchen.

Comes complete with a double garage, and the kids have their own play room, which can double as a study.

We strive to give you exactly what you want with all our new homes so if there is part of this plan that doesn't suit you talk to us about changing it. No problem.

Living Area: 204.8 m<sup>2</sup>  
 Porch Area: 3.9 m<sup>2</sup>  
 Patio Area: 21.4 m<sup>2</sup>  
 Alfresco Area: 25.1 m<sup>2</sup>  
 Garage Area: 41.9 m<sup>2</sup>  
**TOTAL FLOOR AREA: 297.1 m<sup>2</sup>**

133 YOUNGMAN STREET, KINGAROY QLD 4610  
 PHONE 07 4162 5922 FAX 07 4162 5933  
 EMAIL [admininfo@johnprovanbuilding.com.au](mailto:admininfo@johnprovanbuilding.com.au)